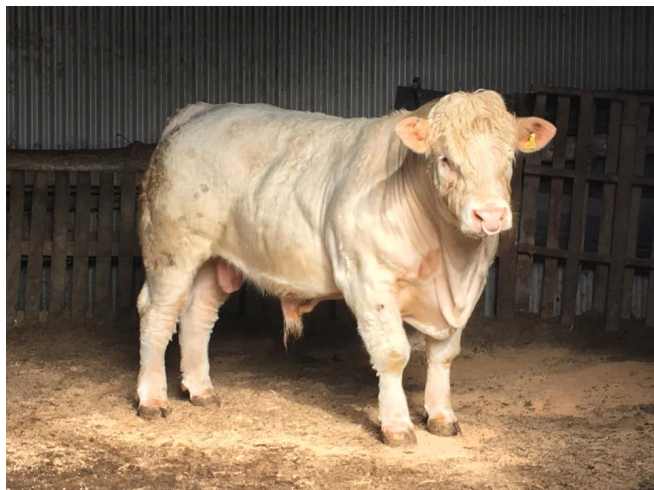


**MARKET REPORT FOR WHITLAND LIVESTOCK MARKET FOR
SATURDAY 18th March 2017**

Falling just short of 400 cattle it was one of, if not the, largest store mart in the region for the week. And the strong trade that Whitland has seen throughout 2017 to now continued. The top 50 steers were over £900 and half those were over £1000 to a top of £1310 for two smashing Charolais steers from Fulcher, Islands View who also sold at £1180 and £1170. The heifer section was full of quality but lacking in any real size possibly. They still averaged in excess of £700/head and got to a top price of £1040 for Angus X heifers from Lewis, Middle Hook Farm. A Pedigree Charolais Bull from the Stevtel Herd of Steve Fulcher in Narberth sold for £2080 and went to Russell Farms Partnership where we will no doubt see future offspring of his in Whitland sales to come.



Stevtel Longbow sold for £2080



Top price steers at £1310

Store Cattle (376)

Averages	Ave.	Top
Heifers 0-15m	542	720
Heifers 16-24m	741	1040
Heifers 25-30m	792	930
Heifers 30m+		
Steers 0-15m	744	940
Steers 16-24m	801	1180
Steers 25-30m	803	1310
Steers 30m+	708	875

Breed Report

Heifers	Ave.	Top	Vendor
Saler	560	575	Buckle, Little Rhyndaston
British Blue	793	895	Davies, Hendre Farm
Hereford	590	930	Beynon, Cross Farm
Aberdeen Angus	755	1040	Lewis, Middle Hook
Charolais	805	900	Griffiths, Waunfach
Limousin	712	995	Harries, Garregwen

Steers

Friesian	633	805	Raymond, Maildy Uchaf
Shorthorn	600	600	Brown, Ashbrook
Montbeliard	660	660	Phillips, Trevilla
Saler	700	700	Buckle, Little Rhyndaston
Welsh Black	556	580	Phillips, Trevilla
Brown Swiss	630	630	Coaker, Blaenffrwd
British Blue	857	1150	Harries, Clun

Hereford	771	1000	Beynon, Cross Farm
Aberdeen Angus	878	1040	Lewis, Middle Hook
Charolais	1049	1310	Fulcher, Islands View
Simmental	903	1110	Coaker, Blaenffrwd
Limousin	905	1140	Harries, Clun

Breeding Sheep (168)

Ewes and Lamb entry was up on the previous sale and the trade every bit as strong averaging £130 to a top price of £215 for superb yearling suffolks with twins from Jenkins, Lower House, Spittal.

DATES FOR YOUR DIARY

Calf Sales – Now **WEEKLY**, every Tuesday, 10am. The trade we have been seeing at Whitland for both calves and weaned calves has been very competitive and more numbers is definitely needed to satisfy the buyers in attendance and to draw even more buyers. Next Sale, Tuesday 21st March, to include entry of 30-40 mostly Hereford weaned calves from Raymond & Lawrence, Pointz Castle. To enter or for any onformation call Huw now on 07976 328177.

Next Dairy sales – Upcoming dairy sale – Tuesday 28th March, 11.15am. Collective Dairy sale including consignments of fresh calved and incalf heifers. Entries include 35 cows in the dispersal from Phillips Bros, Mounon Farm.

Red Markets for cull cows and fat cattle for herds under TB restrictions. Last sale cows sell to £1100 and excellent trade throughout. Call Gareth on 07812 127824 or Huw on 07976 328177 to book. **Next sale will be Wednesday 5th April, 5.00pm. Entries by Monday 5th March please.**

Whitland Mart is owned by Whitland Mart Ltd. To become a shareholder of the Mart contact the Chairman, Mr Gwyn Scourfield, Trevaughan Farm on 01994 240302.